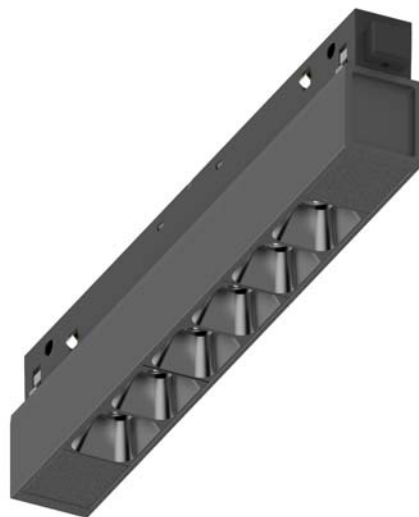


Low Voltage Track System Module ML26-AL190-7W-927-35



| | | |
|---------------------|--------|--------------------------|
| Light Output Ratio: | 100.0% | |
| Luminaire Power: | 6.78 W | |
| SHR Nominal: | 0.50 | Calculated using the TM5 |
| SHR Maximum: | 0.55 | fine grid method. |

C Range: 0 - 360DEG
C Interval: 15.0DEG
Test Speed: HIGH
Temperature: 25.3DEG
Operators: Jason
Test Date: 2020-05-13

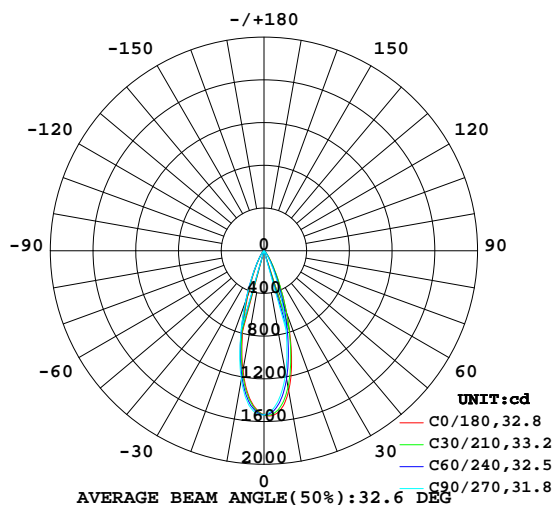
γ Range: 0 - 90DEG
γ Interval: 0.5DEG
Test System: EVERFINE GO-2000B_V1 SYSTEM V2.0.362
Humidity: 58%
Test Distance: 5.850m [K=1.0000]
Remarks:

LUMINAIRE PHOTOMETRIC TEST REPORT

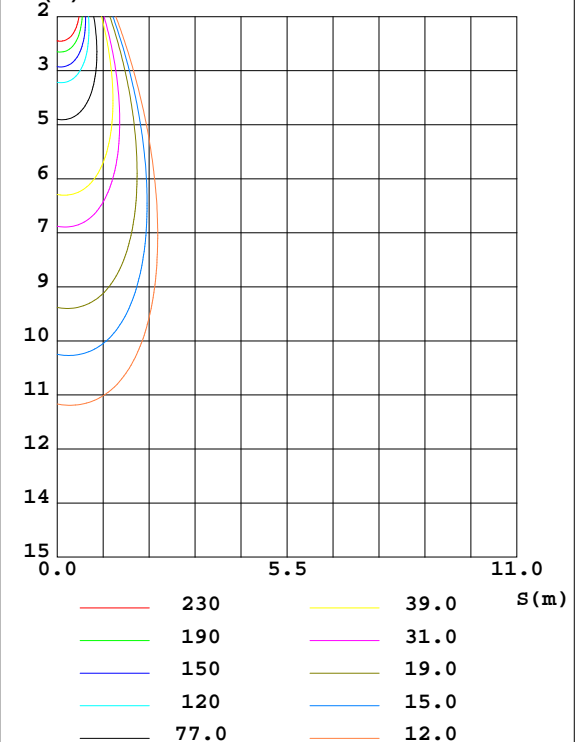
| | | |
|--|--------------------------------------|--|
| Test:U:48.00V I:0.1412A P:6.780W PF:1.000 Freq:0Hz Lamp Flux:565.33x1 lm | | |
| NAME: ML26-AL190-7W-927-35 | TYPE:Low Voltage Track System Module | |
| SPEC.:2700K | DIM.: L192mm*W22mm*H43mm | |
| MFR.: NEKO LIGHTING AG | | |

| DATA OF LAMP | | PHOTOMETRIC DATA Eff: 83.38 lm/W | | | |
|------------------|-------------|----------------------------------|--------|-------------------|----------|
| MODEL | OSRAM-2700K | I _{max} (cd) | 1551 | S/MH(C0/180) | 0.50 |
| NOMINAL POWER(W) | 7 | LOR(%) | 100.0 | S/MH(C90/270) | 0.53 |
| RATED VOLTAGE(V) | 48 | TOTAL FLUX(lm) | 565.33 | η UP,DN(C0-180) | 0.0,49.7 |
| NOMINAL FLUX(lm) | 565.33 | CIE CLASS | DIRECT | η UP,DN(C180-360) | 0.0,50.3 |
| LAMPS INSIDE | 1 | η up(%) | 0.0 | CIBSE SHR NOM | 0.50 |
| TEST VOLTAGE(V) | 48 | η down(%) | 100.0 | CIBSE SHR MAX | 0.55 |

LUMINOUS INTENSITY DISTRIBUTION DIAGRAM



C0 PLANE ISOLUX DIAGRAM (UNIT:lx)



C Range: 0 - 360DEG
C Interval: 15.0DEG
Test Speed: HIGH
Temperature:25.3DEG
Operators:Jason
Test Date:2020-05-13

γ Range: 0 - 90DEG
γ Interval: 0.5DEG
Test System:EVERFINE GO-2000B_V1 SYSTEM V2.0.362
Humidity:58%
Test Distance:5.850m [K=1.0000]
Remarks:

ZONAL FLUX DIAGRAM

ZONAL FLUX DIAGRAM:

| γ | C0 | C45 | C90 | C135 | C180 | C225 | C270 | C315 | γ | Φ zone | Φ total | %lum, lamp |
|----------|-----------------------|--------|--------|--------|--------|--------|--------|--------|----------|-------------|--------------|------------|
| 10 | 1332 | 1269 | 1167 | 1151 | 1137 | 1171 | 1223 | 1306 | 0- 10 | 131.6 | 131.6 | 23.3,23.3 |
| 20 | 621.9 | 591.3 | 477.7 | 477.8 | 443.2 | 483.9 | 502.1 | 617.0 | 10- 20 | 236.2 | 367.8 | 65.1,65.1 |
| 30 | 169.6 | 167.9 | 114.5 | 120.7 | 112.5 | 123.7 | 124.7 | 181.0 | 20- 30 | 131.8 | 499.6 | 88.4,88.4 |
| 40 | 46.59 | 44.30 | 25.90 | 35.94 | 33.94 | 40.66 | 28.03 | 51.13 | 30- 40 | 46.91 | 546.5 | 96.7,96.7 |
| 50 | 9.243 | 10.46 | 2.838 | 9.860 | 8.814 | 10.24 | 4.132 | 12.29 | 40- 50 | 15.75 | 562.2 | 99.4,99.4 |
| 60 | 0.0942 | 0.1306 | 0.2276 | 0.3556 | 0.3431 | 0.4689 | 0.2755 | 0.2605 | 50- 60 | 2.594 | 564.8 | 99.9,99.9 |
| 70 | 0.0503 | 0.0416 | 0.1247 | 0.2119 | 0.2426 | 0.3522 | 0.2330 | 0.0721 | 60- 70 | 0.1882 | 565.0 | 99.9,99.9 |
| 80 | 0.0394 | 0.0416 | 0.0612 | 0.1178 | 0.1782 | 0.3324 | 0.3194 | 0.1354 | 70- 80 | 0.1643 | 565.2 | 100,100 |
| 90 | 0.0372 | 0.0525 | 0.0503 | 0.0896 | 0.0437 | 0.2144 | 0.3171 | 0.2775 | 80- 90 | 0.1704 | 565.3 | 100,100 |
| 100 | | | | | | | | | 90-100 | | | |
| 110 | | | | | | | | | 100-110 | | | |
| 120 | | | | | | | | | 110-120 | | | |
| 130 | | | | | | | | | 120-130 | | | |
| 140 | | | | | | | | | 130-140 | | | |
| 150 | | | | | | | | | 140-150 | | | |
| 160 | | | | | | | | | 150-160 | | | |
| 170 | | | | | | | | | 160-170 | | | |
| 180 | | | | | | | | | 170-180 | | | |
| DEG | LUMINOUS INTENSITY:cd | | | | | | | | | UNIT:lm | | |

Conical surface Flux(90deg): 556.77 lm

%lum = 98.5%

%lamp = 98.5%

Conical surface Flux(120deg): 564.81 lm

%lum = 99.9%

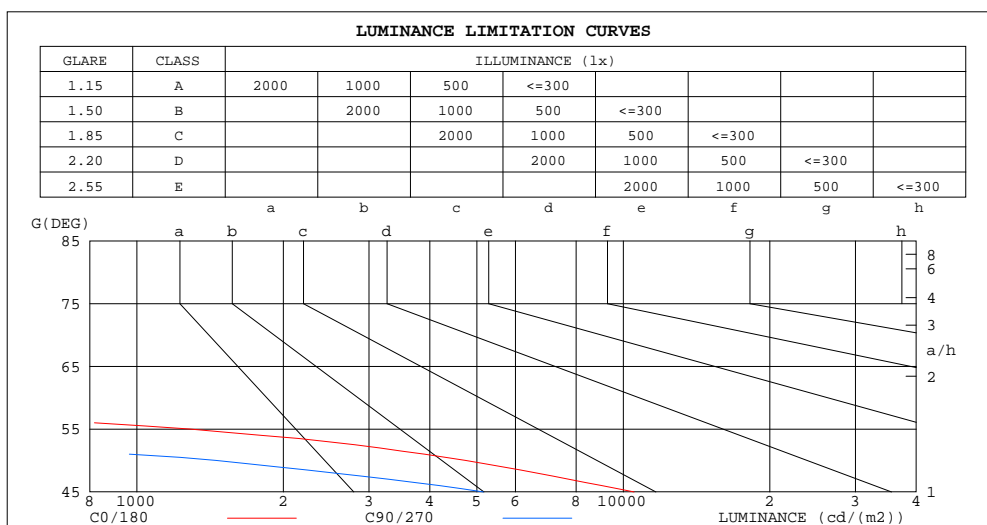
%lamp = 99.9%

C Range: 0 - 360DEG
C Interval: 15.0DEG
Test Speed: HIGH
Temperature:25.3DEG
Operators:Jason
Test Date:2020-05-13

γ Range: 0 - 90DEG
 γ Interval: 0.5DEG
Test System:EVERFINE GO-2000B_V1 SYSTEM V2.0.362
Humidity:58%
Test Distance:5.850m [K=1.0000]
Remarks:

LUMINANCE LIMITATION CURVES

| | | |
|--|--------------------------------------|--|
| Test:U:48.00V I:0.1412A P:6.780W PF:1.000 Freq:0Hz Lamp Flux:565.33x1 lm | | |
| NAME: ML26-AL190-7W-927-35 | TYPE:Low Voltage Track System Module | |
| SPEC.:2700K | DIM.: L192mm*W22mm*H43mm | |
| MFR.: NEKO LIGHTING AG | | |



| LUMINANCE cd/(m2) | | |
|-------------------|--------|---------|
| G(DEG) | C0/180 | C90/270 |
| 85 | 149 | 190 |
| 80 | 75 | 116 |
| 75 | 56 | 109 |
| 70 | 48 | 120 |
| 65 | 48 | 133 |
| 60 | 62 | 150 |
| 55 | 1285 | 175 |
| 50 | 4737 | 1454 |
| 45 | 10518 | 5153 |

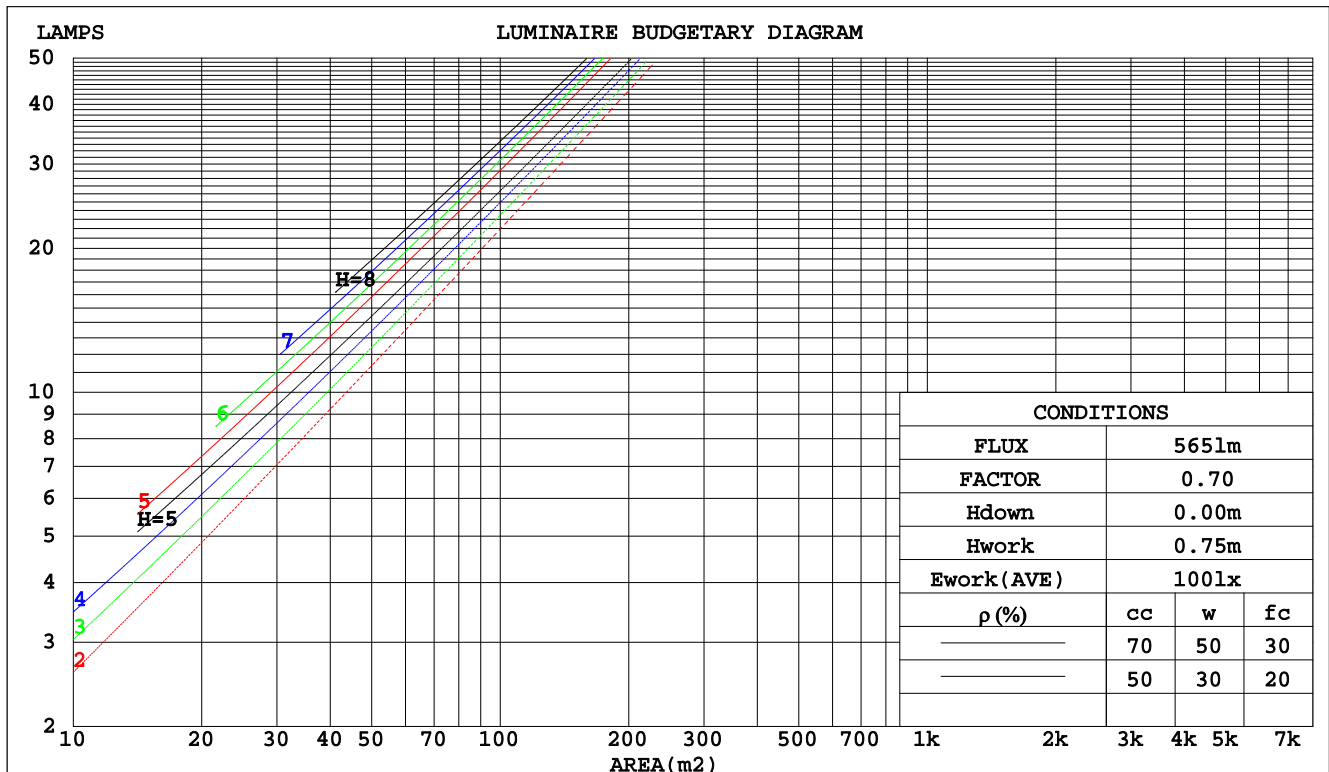
C Range: 0 - 360DEG
C Interval: 15.0DEG
Test Speed: HIGH
Temperature:25.3DEG
Operators:Jason
Test Date:2020-05-13

γ Range: 0 - 90DEG
γ Interval: 0.5DEG
Test System:EVERFINE GO-2000B_V1 SYSTEM V2.0.362
Humidity:58%
Test Distance:5.850m [K=1.0000]
Remarks:

CU AND LUMINAIRE BUDGETARY ESTIMATE DIAGRAM

| | | |
|--|--------------------------------------|--|
| Test:U:48.00V I:0.1412A P:6.780W PF:1.000 Freq:0Hz Lamp Flux:565.33x1 lm | | |
| NAME: ML26-AL190-7W-927-35 | TYPE:Low Voltage Track System Module | |
| SPEC.:2700K | DIM.: L192mm*W22mm*H43mm | |
| MFR.: NEKO LIGHTING AG | | |

| pcc | 80% | | | 70% | | | 50% | | | 30% | | | 10% | | | 0 |
|------|-----------------------|------|------|------|------|------|---------------------------------|------|------|------|------|------|------|------|------|------|
| pw | 50% | 30% | 10% | 50% | 30% | 10% | 50% | 30% | 10% | 50% | 30% | 10% | 50% | 30% | 10% | 0 |
| pfc | 20% | | | 20% | | | 20% | | | 20% | | | 20% | | | 0 |
| RCR | RCR:Room Cavity Ratio | | | | | | Coefficients of Utilization(CU) | | | | | | | | | |
| 0.0 | 1.19 | 1.19 | 1.19 | 1.16 | 1.16 | 1.16 | 1.11 | 1.11 | 1.11 | 1.06 | 1.06 | 1.06 | 1.02 | 1.02 | 1.02 | 1.00 |
| 1.0 | 1.12 | 1.10 | 1.08 | 1.10 | 1.08 | 1.06 | 1.06 | 1.04 | 1.03 | 1.02 | 1.01 | 1.00 | .99 | .98 | .97 | .95 |
| 2.0 | 1.06 | 1.03 | .00 | 1.04 | 1.01 | .99 | 1.01 | .99 | .97 | .98 | .96 | .94 | .96 | .94 | .93 | .91 |
| 3.0 | 1.00 | .96 | .93 | .99 | .95 | .92 | .97 | .94 | .91 | .94 | .92 | .90 | .92 | .90 | .88 | .87 |
| 4.0 | .96 | .91 | .88 | .95 | .90 | .87 | .92 | .89 | .86 | .91 | .88 | .85 | .89 | .86 | .84 | .83 |
| 5.0 | .91 | .86 | .83 | .90 | .86 | .83 | .89 | .85 | .82 | .87 | .84 | .81 | .86 | .83 | .81 | .79 |
| 6.0 | .87 | .82 | .79 | .86 | .82 | .79 | .85 | .81 | .78 | .84 | .80 | .78 | .83 | .79 | .77 | .76 |
| 7.0 | .84 | .79 | .75 | .83 | .78 | .75 | .82 | .78 | .75 | .81 | .77 | .74 | .80 | .76 | .74 | .73 |
| 8.0 | .80 | .75 | .72 | .80 | .75 | .72 | .79 | .75 | .72 | .78 | .74 | .71 | .77 | .74 | .71 | .70 |
| 9.0 | .77 | .72 | .69 | .77 | .72 | .69 | .76 | .72 | .69 | .75 | .71 | .69 | .74 | .71 | .68 | .67 |
| 10.0 | .74 | .70 | .66 | .74 | .69 | .66 | .73 | .69 | .66 | .72 | .69 | .66 | .72 | .68 | .66 | .65 |



C Range: 0 - 360DEG
C Interval: 15.0DEG
Test Speed: HIGH
Temperature:25.3DEG
Operators:Jason
Test Date:2020-05-13

γ Range: 0 - 90DEG
γ Interval: 0.5DEG
Test System:EVERFINE GO-2000B_V1 SYSTEM V2.0.362
Humidity:58%
Test Distance:5.850m [K=1.0000]
Remarks:

WEC AND CCEC

| | | |
|--|--------------------------------------|--|
| Test:U:48.00V I:0.1412A P:6.780W PF:1.000 Freq:0Hz Lamp Flux:565.33x1 lm | | |
| NAME: ML26-AL190-7W-927-35 | TYPE:Low Voltage Track System Module | |
| SPEC.:2700K | DIM.: L192mm*W22mm*H43mm | |
| MFR.: NEKO LIGHTING AG | | |

| pcc | 80% | | | 70% | | | 50% | | | 30% | | | 10% | | | 0 | |
|------|-----------------------|------|------|------|------|------|---------------------------------|------|------|------|------|------|------|------|------|---|--|
| pw | 50% | 30% | 10% | 50% | 30% | 10% | 50% | 30% | 10% | 50% | 30% | 10% | 50% | 30% | 10% | 0 | |
| pfc | 20% | | | 20% | | | 20% | | | 20% | | | 20% | | | 0 | |
| RCR | RCR:Room Cavity Ratio | | | | | | Wall Exitance Coefficients(WEC) | | | | | | | | | | |
| 0.0 | | | | | | | | | | | | | | | | | |
| 1.0 | .152 | .086 | .027 | .145 | .083 | .026 | .133 | .076 | .024 | .121 | .070 | .022 | .111 | .064 | .021 | | |
| 2.0 | .143 | .078 | .024 | .137 | .076 | .023 | .127 | .071 | .022 | .117 | .066 | .021 | .109 | .061 | .019 | | |
| 3.0 | .135 | .072 | .021 | .130 | .070 | .021 | .121 | .066 | .020 | .113 | .062 | .019 | .106 | .058 | .018 | | |
| 4.0 | .127 | .066 | .019 | .123 | .064 | .019 | .116 | .061 | .018 | .109 | .058 | .018 | .103 | .056 | .017 | | |
| 5.0 | .121 | .061 | .018 | .117 | .060 | .018 | .111 | .058 | .017 | .105 | .055 | .016 | .099 | .053 | .016 | | |
| 6.0 | .115 | .058 | .016 | .112 | .056 | .016 | .106 | .054 | .016 | .101 | .053 | .015 | .096 | .051 | .015 | | |
| 7.0 | .109 | .054 | .015 | .107 | .053 | .015 | .102 | .052 | .015 | .097 | .050 | .015 | .093 | .048 | .014 | | |
| 8.0 | .105 | .051 | .014 | .102 | .050 | .014 | .098 | .049 | .014 | .094 | .048 | .014 | .090 | .046 | .014 | | |
| 9.0 | .100 | .049 | .014 | .098 | .048 | .013 | .094 | .047 | .013 | .091 | .046 | .013 | .087 | .044 | .013 | | |
| 10.0 | .096 | .046 | .013 | .095 | .046 | .013 | .091 | .045 | .013 | .088 | .044 | .012 | .085 | .043 | .012 | | |

| ρcc | 80% | | | 70% | | | 50% | | | 30% | | | 10% | | | 0 | |
|------|-----------------------|------|------|------|------|------|--|------|------|------|------|------|------|------|------|---|--|
| ρw | 50% | 30% | 10% | 50% | 30% | 10% | 50% | 30% | 10% | 50% | 30% | 10% | 50% | 30% | 10% | 0 | |
| ρfc | 20% | | | 20% | | | 20% | | | 20% | | | 20% | | | 0 | |
| RCR | RCR:Room Cavity Ratio | | | | | | Ceiling Cavity Exitance Coefficients(CCEC) | | | | | | | | | | |
| 0.0 | .190 | .190 | .190 | .163 | .163 | .163 | .111 | .111 | .111 | .064 | .064 | .064 | .020 | .020 | .020 | | |
| 1.0 | .169 | .158 | .147 | .145 | .135 | .126 | .099 | .093 | .087 | .057 | .054 | .051 | .018 | .017 | .016 | | |
| 2.0 | .152 | .133 | .116 | .131 | .114 | .100 | .089 | .079 | .070 | .052 | .046 | .041 | .017 | .015 | .013 | | |
| 3.0 | .138 | .113 | .093 | .119 | .098 | .081 | .081 | .068 | .057 | .047 | .040 | .033 | .015 | .013 | .011 | | |
| 4.0 | .127 | .098 | .076 | .109 | .085 | .066 | .075 | .059 | .047 | .043 | .035 | .028 | .014 | .011 | .009 | | |
| 5.0 | .117 | .086 | .063 | .101 | .075 | .055 | .069 | .052 | .039 | .040 | .031 | .023 | .013 | .010 | .008 | | |
| 6.0 | .109 | .077 | .053 | .093 | .066 | .046 | .064 | .046 | .033 | .037 | .027 | .020 | .012 | .009 | .006 | | |
| 7.0 | .102 | .069 | .045 | .087 | .059 | .040 | .060 | .042 | .028 | .035 | .025 | .017 | .011 | .008 | .006 | | |
| 8.0 | .096 | .062 | .039 | .082 | .054 | .034 | .057 | .038 | .024 | .033 | .022 | .014 | .011 | .007 | .005 | | |
| 9.0 | .090 | .057 | .034 | .078 | .049 | .030 | .054 | .035 | .021 | .031 | .020 | .013 | .010 | .007 | .004 | | |
| 10.0 | .085 | .052 | .030 | .074 | .045 | .026 | .051 | .032 | .018 | .030 | .019 | .011 | .010 | .006 | .004 | | |

C Range: 0 - 360DEG
C Interval: 15.0DEG
Test Speed: HIGH
Temperature:25.3DEG
Operators:Jason
Test Date:2020-05-13

γ Range: 0 - 90DEG
γ Interval: 0.5DEG
Test System:EVERFINE GO-2000B_V1 SYSTEM V2.0.362
Humidity:58%
Test Distance:5.850m [K=1.0000]
Remarks:

UGR(Unified Glare Rating) Table

| | | | | | | | | | | |
|--|------------------|------|------|------|--------------------------------------|----------------|------|------|------|------|
| Test:U:48.00V I:0.1412A P:6.780W PF:1.000 Freq:0Hz Lamp Flux:565.33x1 lm | | | | | | | | | | |
| NAME: ML26-AL190-7W-927-35 | | | | | TYPE:Low Voltage Track System Module | | | | | |
| SPEC.:2700K | | | | | DIM.: L192mm*W22mm*H43mm | | | | | |
| MFR.: NEKO LIGHTING AG | | | | | | | | | | |
| ceiling/cavity | 0.7 | 0.7 | 0.5 | 0.5 | 0.3 | 0.7 | 0.7 | 0.5 | 0.5 | 0.3 |
| walls | 0.5 | 0.3 | 0.5 | 0.3 | 0.3 | 0.5 | 0.3 | 0.5 | 0.3 | 0.3 |
| working plane | 0.2 | 0.2 | 0.2 | 0.2 | 0.2 | 0.2 | 0.2 | 0.2 | 0.2 | 0.2 |
| Room dimensions | Viewed crosswise | | | | | Viewed endwise | | | | |
| x = 2H y = 2H | 16.2 | 17.0 | 16.4 | 17.1 | 17.3 | 13.5 | 14.2 | 13.7 | 14.4 | 14.6 |
| 3H | 16.1 | 16.8 | 16.3 | 17.0 | 17.2 | 13.3 | 14.0 | 13.6 | 14.2 | 14.4 |
| 4H | 16.0 | 16.7 | 16.2 | 16.9 | 17.1 | 13.2 | 13.9 | 13.5 | 14.1 | 14.3 |
| 6H | 15.9 | 16.5 | 16.2 | 16.8 | 17.0 | 13.2 | 13.8 | 13.4 | 14.0 | 14.3 |
| 8H | 15.9 | 16.5 | 16.2 | 16.7 | 17.0 | 13.1 | 13.7 | 13.4 | 14.0 | 14.2 |
| 12H | 15.8 | 16.4 | 16.1 | 16.7 | 16.9 | 13.1 | 13.6 | 13.4 | 13.9 | 14.2 |
| 4H 2H | 16.0 | 16.7 | 16.2 | 16.9 | 17.1 | 13.3 | 13.9 | 13.5 | 14.1 | 14.4 |
| 3H | 15.8 | 16.4 | 16.1 | 16.7 | 16.9 | 13.1 | 13.7 | 13.4 | 13.9 | 14.2 |
| 4H | 15.7 | 16.2 | 16.1 | 16.5 | 16.8 | 13.0 | 13.5 | 13.3 | 13.8 | 14.1 |
| 6H | 15.6 | 16.1 | 16.0 | 16.4 | 16.8 | 12.9 | 13.4 | 13.3 | 13.7 | 14.0 |
| 8H | 15.6 | 16.0 | 15.9 | 16.3 | 16.7 | 12.8 | 13.3 | 13.2 | 13.6 | 14.0 |
| 12H | 15.5 | 15.9 | 15.9 | 16.3 | 16.7 | 12.8 | 13.2 | 13.2 | 13.6 | 13.9 |
| 8H 4H | 15.6 | 16.0 | 15.9 | 16.3 | 16.7 | 12.8 | 13.3 | 13.2 | 13.6 | 14.0 |
| 6H | 15.5 | 15.8 | 15.9 | 16.2 | 16.6 | 12.7 | 13.1 | 13.1 | 13.5 | 13.9 |
| 8H | 15.4 | 15.7 | 15.8 | 16.1 | 16.6 | 12.7 | 13.0 | 13.1 | 13.4 | 13.8 |
| 12H | 15.3 | 15.6 | 15.8 | 16.0 | 16.5 | 12.6 | 12.9 | 13.1 | 13.3 | 13.8 |
| 12H 4H | 15.5 | 15.9 | 15.9 | 16.3 | 16.7 | 12.8 | 13.2 | 13.2 | 13.5 | 13.9 |
| 6H | 15.4 | 15.7 | 15.8 | 16.1 | 16.6 | 12.7 | 13.0 | 13.1 | 13.4 | 13.8 |
| 8H | 15.3 | 15.6 | 15.8 | 16.0 | 16.5 | 12.6 | 12.9 | 13.1 | 13.3 | 13.8 |
| Variations with the observer position at spacings: | | | | | | | | | | |
| S = 1.0H | + 2.8 / -19.6 | | | | | + 2.6 / -21.5 | | | | |
| 1.5H | + 4.6 / - 9.7 | | | | | + 4.2 / -15.7 | | | | |
| 2.0H | + 6.4 / -23.2 | | | | | + 6.3 / -15.7 | | | | |

CIE Pub.117, 565.3 lm Total Lamp Luminous Flux Correct ($8\log(F/F_0) = -2.0$)

C Range: 0 - 360DEG
C Interval: 15.0DEG
Test Speed: HIGH
Temperature:25.3DEG
Operators:Jason
Test Date:2020-05-13

γ Range: 0 - 90DEG
 γ Interval: 0.5DEG
Test System:EVERFINE GO-2000B_V1 SYSTEM V2.0.362
Humidity:58%
Test Distance:5.850m [K=1.0000]
Remarks:

UTILIZATION FACTORS TABLE

| | | |
|--|--------------------------------------|--|
| Test:U:48.00V I:0.1412A P:6.780W PF:1.000 Freq:0Hz Lamp Flux:565.33x1 lm | | |
| NAME: ML26-AL190-7W-927-35 | TYPE:Low Voltage Track System Module | |
| SPEC.:2700K | DIM.: L192mm*W22mm*H43mm | |
| MFR.: NEKO LIGHTING AG | | |

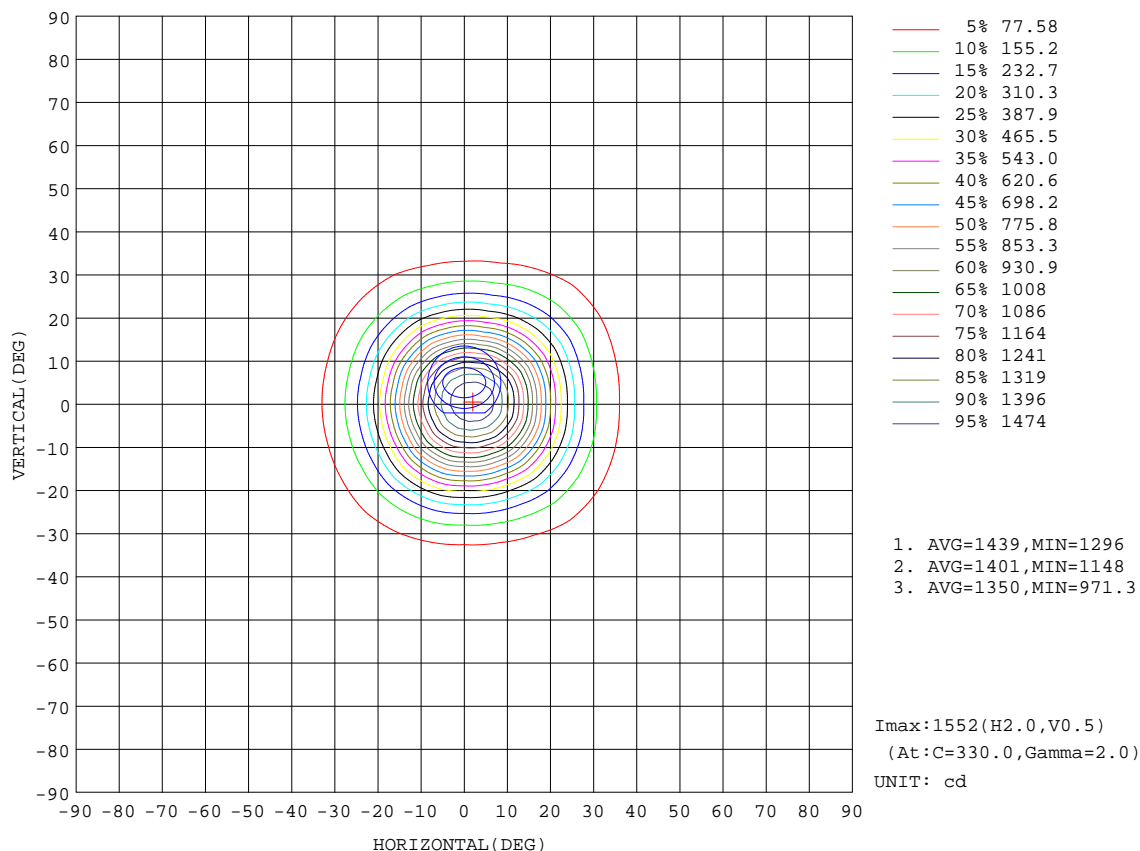
| REFLECTANCE | | | | | | | | | | |
|----------------------------------|---|-----|-----------|-----|-----|-----|-----|---------------|-----|--------|
| Ceiling | 0.8 | 0.8 | 0.8 | 0.7 | 0.7 | 0.7 | 0.5 | 0.5 | 0.5 | 0 |
| Walls | 0.7 | 0.5 | 0.3 | 0.7 | 0.5 | 0.3 | 0.7 | 0.5 | 0.3 | 0 |
| Working plane | 0.2 | 0.2 | 0.2 | 0.2 | 0.2 | 0.2 | 0.2 | 0.2 | 0.2 | 0 |
| ROOM INDEX | UTILIZATION FACTORS(PERCENT) $k(RI) \times RCR = 5$ | | | | | | | | | |
| $k = 0.60$ | 89 | 83 | 80 | 89 | 83 | 80 | 88 | 83 | 80 | 76 |
| 0.80 | 97 | 91 | 88 | 96 | 91 | 88 | 95 | 90 | 87 | 84 |
| 1.00 | 101 | 96 | 92 | 100 | 95 | 92 | 98 | 95 | 91 | 88 |
| 1.25 | 104 | 100 | 96 | 103 | 99 | 96 | 102 | 98 | 95 | 91 |
| 1.50 | 107 | 103 | 100 | 106 | 102 | 99 | 104 | 100 | 98 | 94 |
| 2.00 | 109 | 106 | 103 | 108 | 104 | 102 | 105 | 103 | 100 | 95 |
| 2.50 | 111 | 107 | 105 | 109 | 106 | 104 | 106 | 104 | 102 | 96 |
| 3.00 | 112 | 109 | 107 | 111 | 108 | 106 | 107 | 105 | 103 | 97 |
| 4.00 | 114 | 112 | 110 | 112 | 110 | 108 | 109 | 107 | 106 | 99 |
| 5.00 | 115 | 113 | 112 | 113 | 112 | 110 | 109 | 108 | 107 | 99 |
| ROOM INDEX | UF(total) | | | | | | | | | Direct |
| According to DIN EN 13032-2 2004 | | | Suspended | | | | | SHRNOM = 1.25 | | |

C Range: 0 - 360DEG
 C Interval: 15.0DEG
 Test Speed: HIGH
 Temperature:25.3DEG
 Operators:Jason
 Test Date:2020-05-13

γ Range: 0 - 90DEG
 γ Interval: 0.5DEG
 Test System:EVERFINE GO-2000B_V1 SYSTEM V2.0.362
 Humidity:58%
 Test Distance:5.850m [K=1.0000]
 Remarks:

ISOCANDELA DIAGRAM

| | | |
|--|--------------------------------------|--|
| Test:U:48.00V I:0.1412A P:6.780W PF:1.000 Freq:0Hz Lamp Flux:565.33x1 lm | | |
| NAME: ML26-AL190-7W-927-35 | TYPE:Low Voltage Track System Module | |
| SPEC.:2700K | DIM.: L192mm*W22mm*H43mm | |
| MFR.: NEKO LIGHTING AG | | |



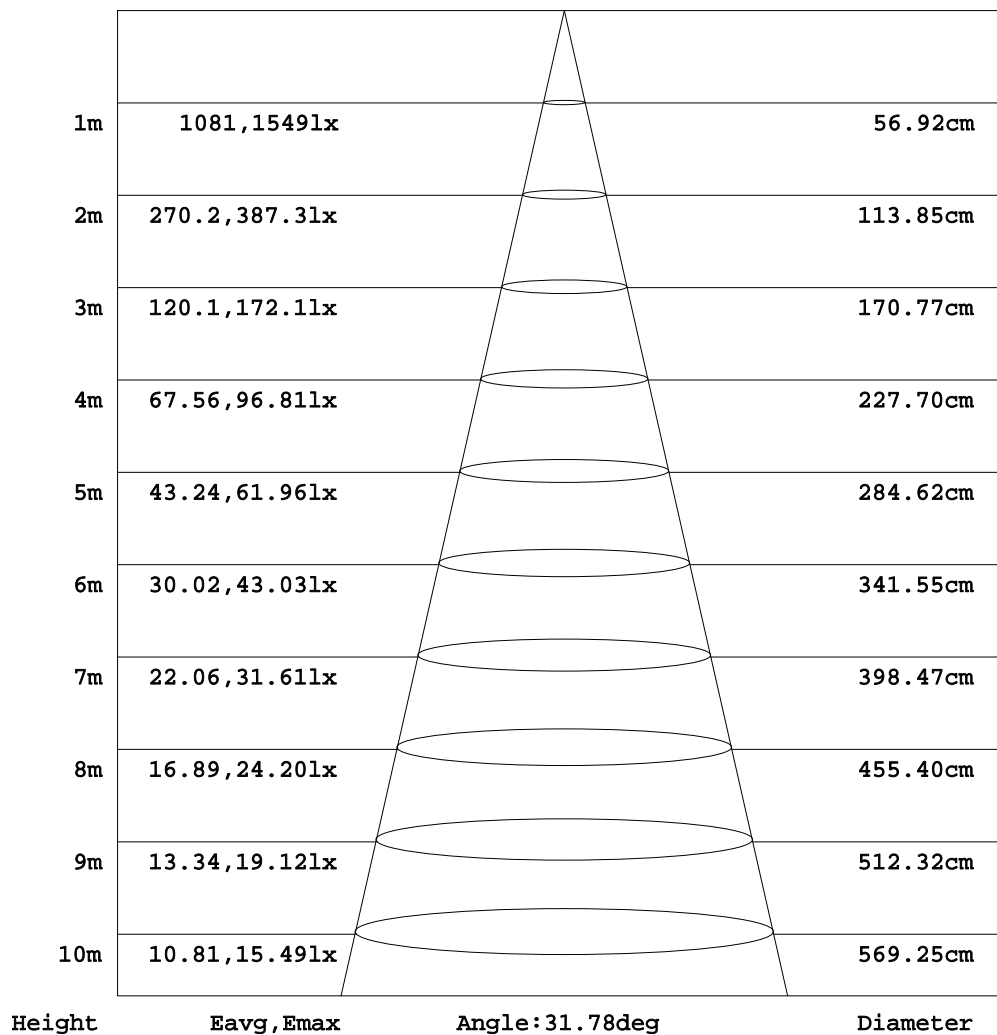
C Range: 0 - 360DEG
C Interval: 15.0DEG
Test Speed: HIGH
Temperature:25.3DEG
Operators:Jason
Test Date:2020-05-13

γ Range: 0 - 90DEG
γ Interval: 0.5DEG
Test System:EVERFINE GO-2000B_V1 SYSTEM V2.0.362
Humidity:58%
Test Distance:5.850m [K=1.0000]
Remarks:

AAI Figure

| | | |
|--|--------------------------------------|--|
| Test:U:48.00V I:0.1412A P:6.780W PF:1.000 Freq:0Hz Lamp Flux:565.33x1 lm | | |
| NAME: ML26-AL190-7W-927-35 | TYPE:Low Voltage Track System Module | |
| SPEC.:2700K | DIM.: L192mm*W22mm*H43mm | |
| MFR.: NEKO LIGHTING AG | | |

Flux out:279.2 lm



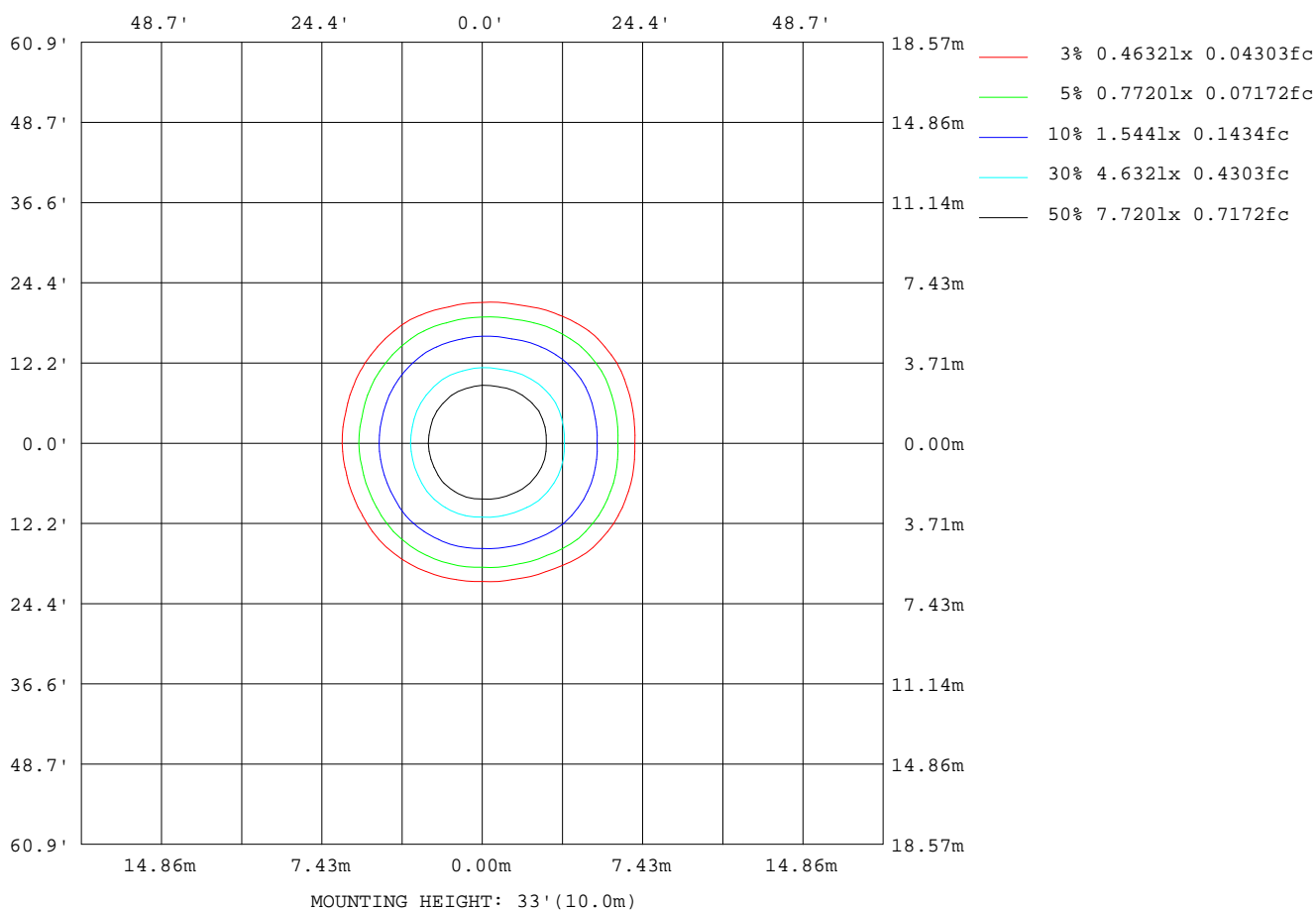
Note:The Curves indicate the illuminated area and the average illumination when the luminaire is at different distance.

C Range: 0 - 360DEG
C Interval: 15.0DEG
Test Speed: HIGH
Temperature:25.3DEG
Operators:Jason
Test Date:2020-05-13

γ Range: 0 - 90DEG
γ Interval: 0.5DEG
Test System:EVERFINE GO-2000B_V1 SYSTEM V2.0.362
Humidity:58%
Test Distance:5.850m [K=1.0000]
Remarks:

ISOLUX DIAGRAM

| | | |
|--|--------------------------------------|--|
| Test:U:48.00V I:0.1412A P:6.780W PF:1.000 Freq:0Hz Lamp Flux:565.33x1 lm | | |
| NAME: ML26-AL190-7W-927-35 | TYPE:Low Voltage Track System Module | |
| SPEC.:2700K | DIM.: L192mm*W22mm*H43mm | |
| MFR.: NEKO LIGHTING AG | | |



C Range: 0 - 360DEG
C Interval: 15.0DEG
Test Speed: HIGH
Temperature:25.3DEG
Operators:Jason
Test Date:2020-05-13

γ Range: 0 - 90DEG
γ Interval: 0.5DEG
Test System:EVERFINE GO-2000B_V1 SYSTEM V2.0.362
Humidity:58%
Test Distance:5.850m [K=1.0000]
Remarks:

LED Avg.L Report

| | | |
|--|--------------------------------------|--|
| Test:U:48.00V I:0.1412A P:6.780W PF:1.000 Freq:0Hz Lamp Flux:565.33x1 lm | | |
| NAME: ML26-AL190-7W-927-35 | TYPE:Low Voltage Track System Module | |
| SPEC.:2700K | DIM.: L192mm*W22mm*H43mm | |
| MFR.: NEKO LIGHTING AG | | |

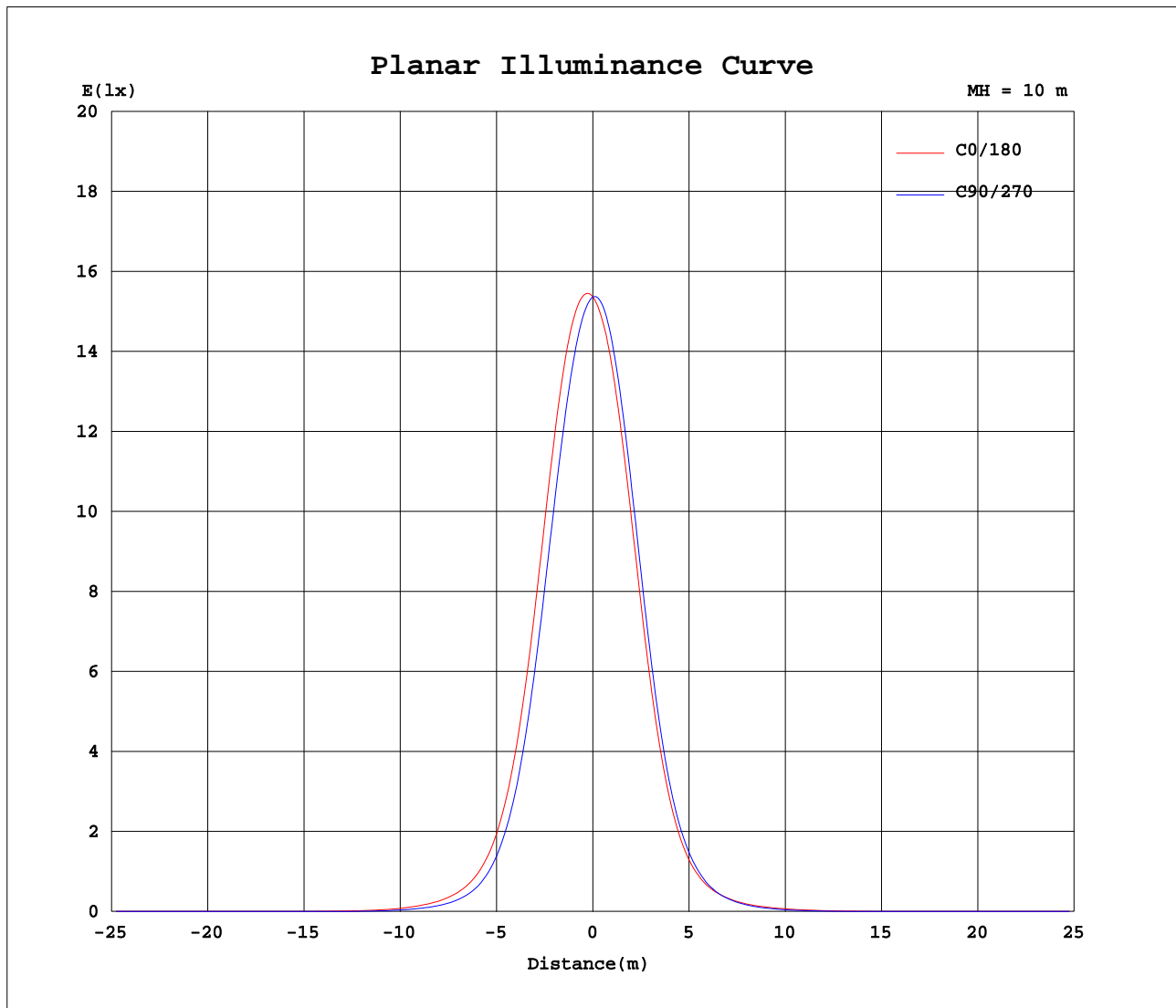
| AvgL | cd/m2 |
|----------------|-------|
| L_0~180(65)av | 140 |
| L_0~180(75)av | 156 |
| L_0~180(85)av | 322 |
| L_90~270(65)av | 158 |
| L_90~270(75)av | 219 |
| L_90~270(85)av | 762 |
| L_45(65)av | 148 |
| L_45(75)av | 204 |
| L_45(85)av | 624 |

Standard: GB/T 29293-2012

C Range: 0 - 360DEG
C Interval: 15.0DEG
Test Speed: HIGH
Temperature:25.3DEG
Operators:Jason
Test Date:2020-05-13

γ Range: 0 - 90DEG
γ Interval: 0.5DEG
Test System:EVERFINE GO-2000B_V1 SYSTEM V2.0.362
Humidity:58%
Test Distance:5.850m [K=1.0000]
Remarks:

Planar Illuminance Curve



C Range: 0 - 360DEG
C Interval: 15.0DEG
Test Speed: HIGH
Temperature: 25.3DEG
Operators: Jason
Test Date: 2020-05-13

γ Range: 0 - 90DEG
 γ Interval: 0.5DEG
Test System: EVERFINE GO-2000B_V1 SYSTEM V2.0.362
Humidity: 58%
Test Distance: 5.850m [K=1.0000]
Remarks:

```

γ Range: 0 - 90DEG
γ Interval: 0.5DEG
Test System:EVERFINE GO-2000B_V1 SYSTEM V2.0.362
Humidity:58%
Test Distance:5.850m [K=1.0000]
Remarks:

```

```

γ Range: 0 - 90DEG
γ Interval: 0.5DEG
Test System:EVERFINE GO-2000B_V1 SYSTEM V2.0.362
Humidity:58%
Test Distance:5.850m [K=1.0000]
Remarks:

```